



Running Specstraps



www.sportzware.com
www.sportingpulse.com

functionality, sporting communities,
world class internet solutions, fixtures,
memberships, competition management,
communications, match statistics,
results processing, associations.



What is a specstrap?

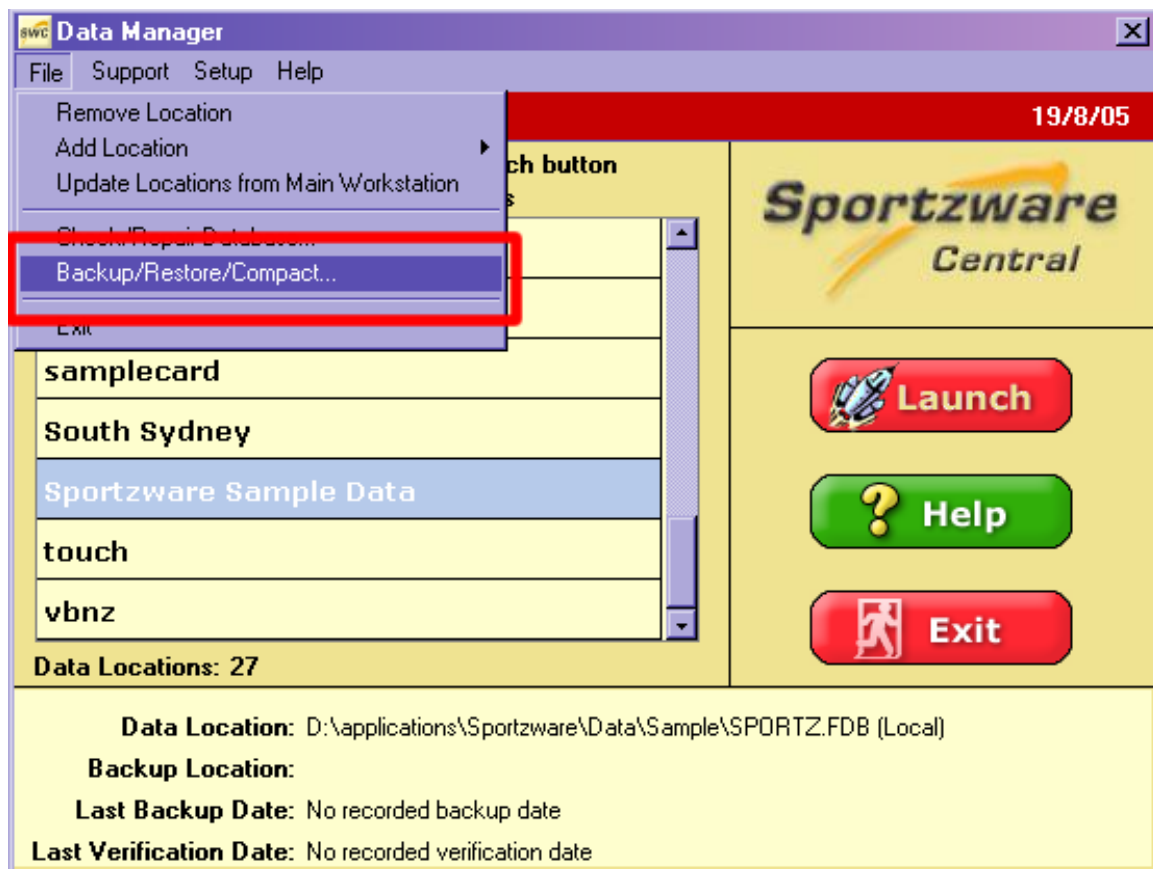
A specstrap is a file sent to you by SportingPulse that will perform customised updates to your database.

Running a specstrap (stand-alone install)

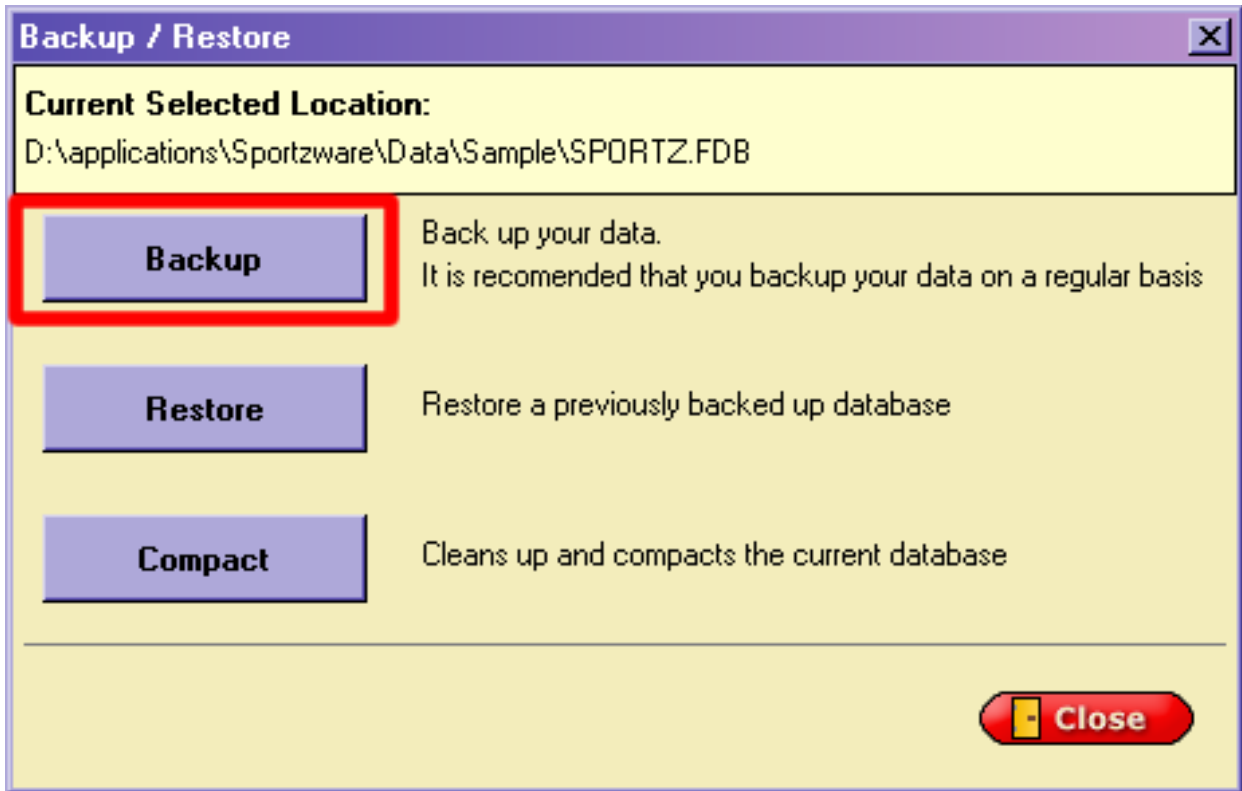
If you are running Sportzware Central on a network, see [Running a specstrap \(network install\)](#) (see Page 5).

1. Backup your database.

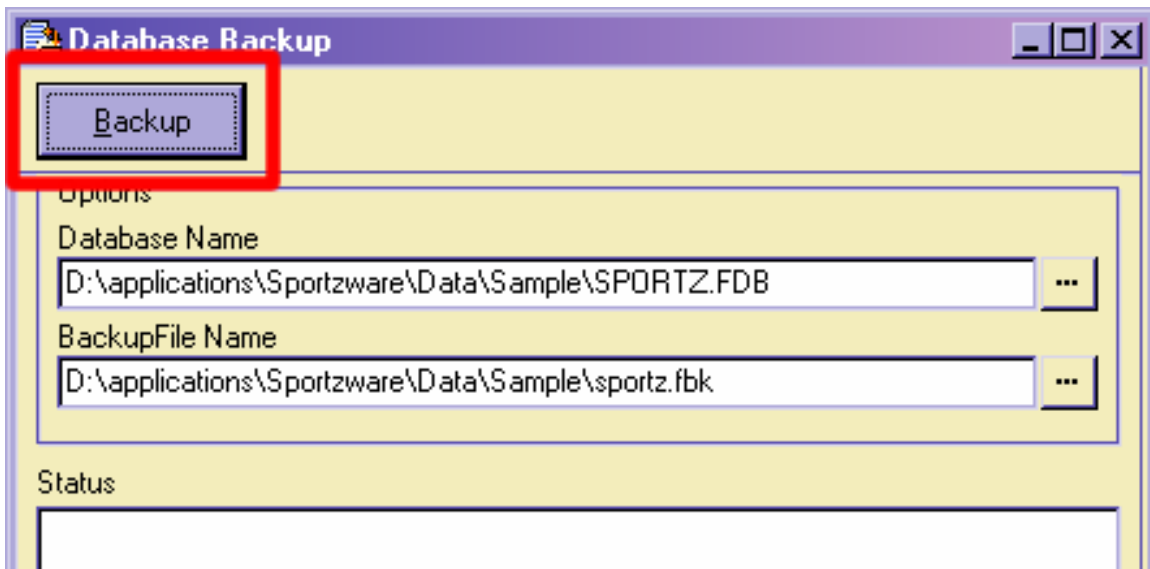
- a) In the Sportzware Central data manager, single click on your database location so that it is highlighted.
- b) In the dropdown menu at the top of the data manager, select File and then Backup/Restore/Compact.



c) Click Backup.

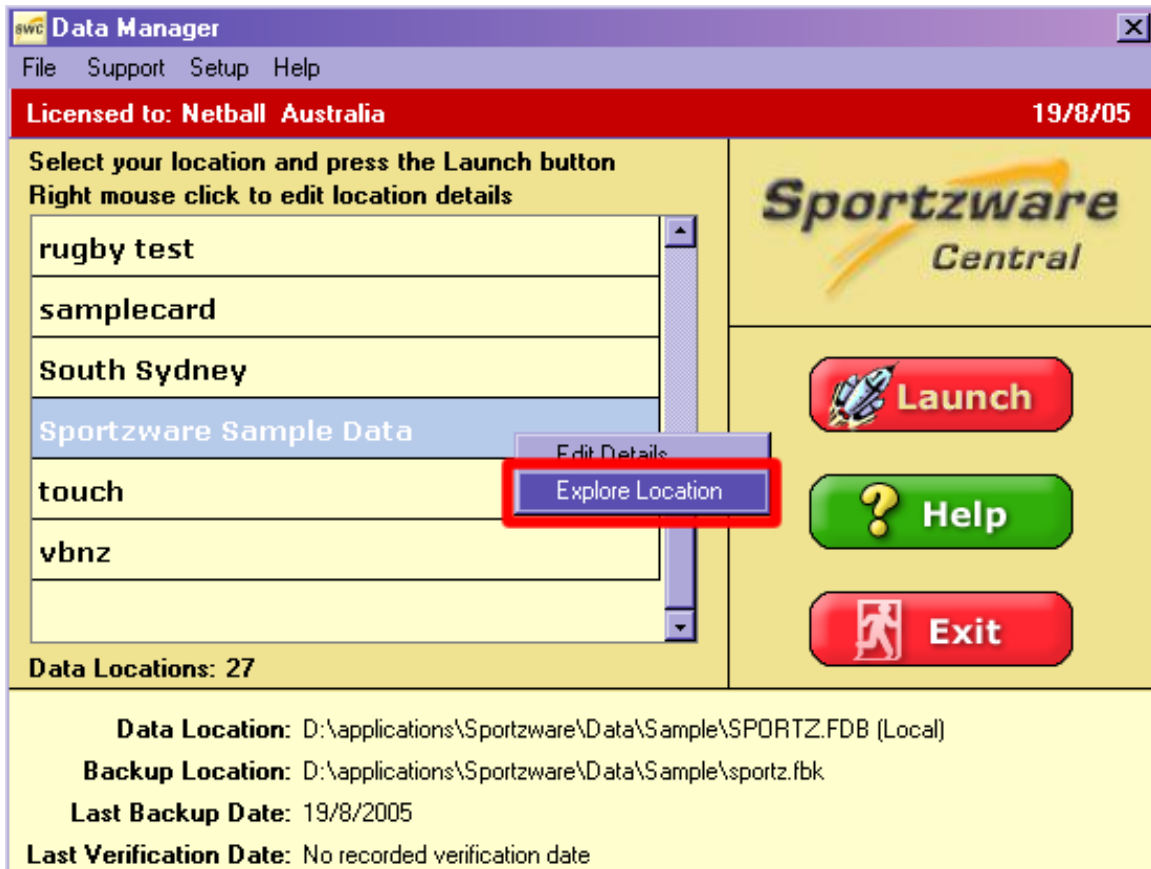


d) On the Database Backup window that appears, click Backup. This process can take several minutes, depending on the size of your database.



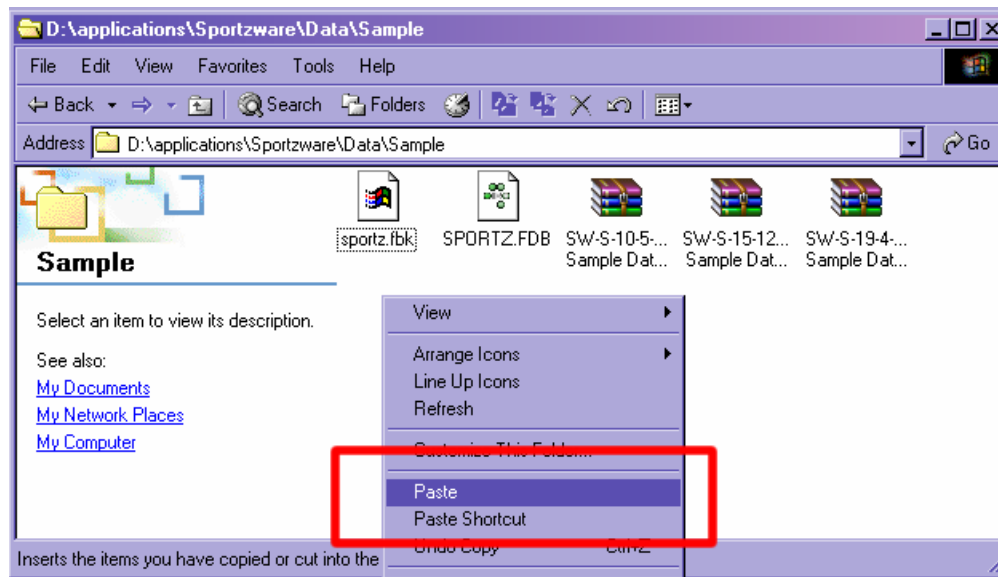
2. Copy specstrap.cfg into your database folder.

- a) In the Sportzware Central Data Manager, right click on the data you want to run the specstrap on then click Explore Location. You should see a folder window appear.



- b) Switch to your email program and copy the specstrap.cfg attachment sent to you by SportingPulse.

- c) Right click in the folder window and select Paste. You should see the specstrap.cfg file appear in the window.

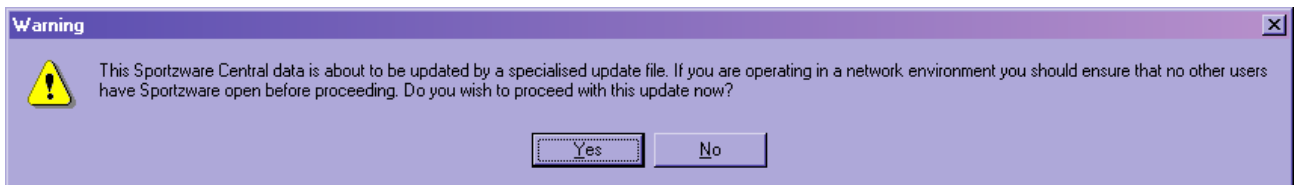


3. Launch your Database.

- a) In the Data Manager, click on the launch button



- b) The popup message shown below should appear. Click Yes.



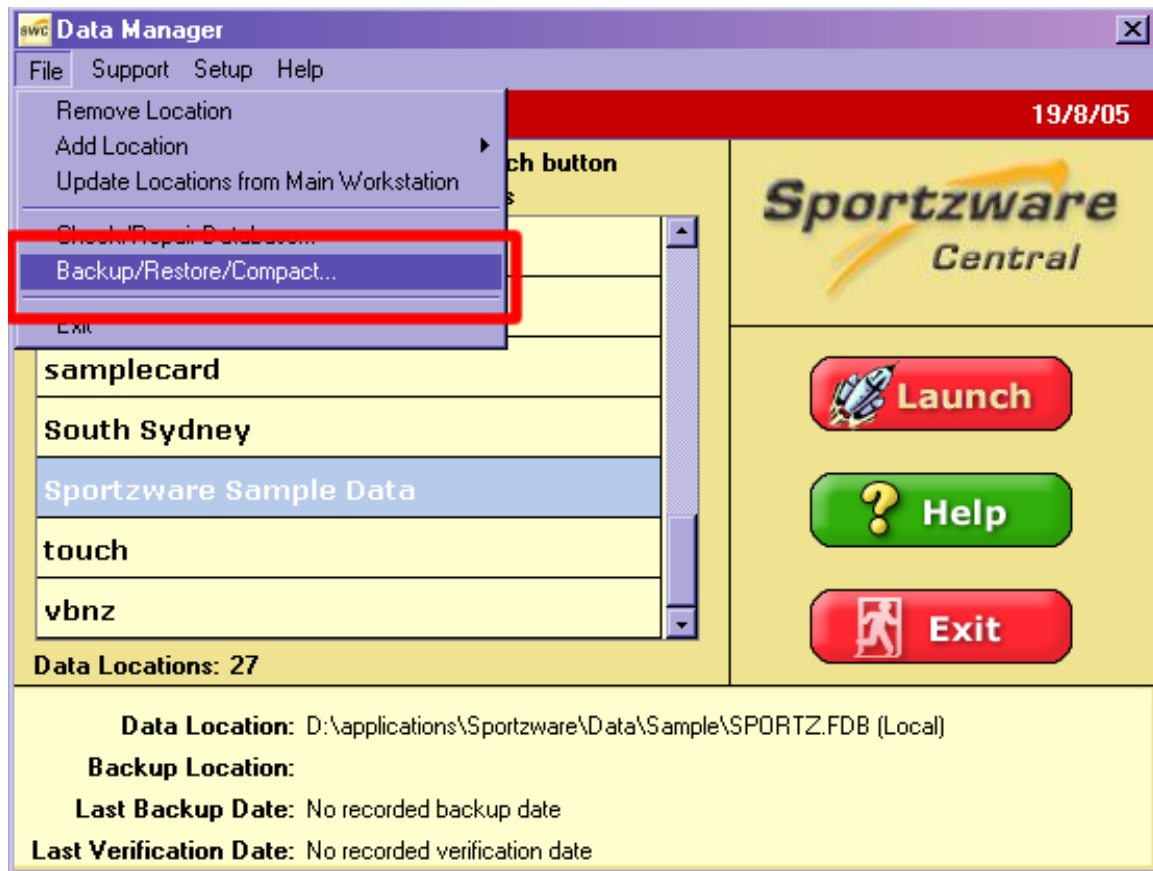
If you experience any issues or have any queries then please do not hesitate to contact SportingPulse Support on any of the below details:

Phone (Australia): 1300 13 99 70
Phone (New Zealand): 0800 808 202
Phone: +61 3 9872 5277
Email: support@sportingpulse.com

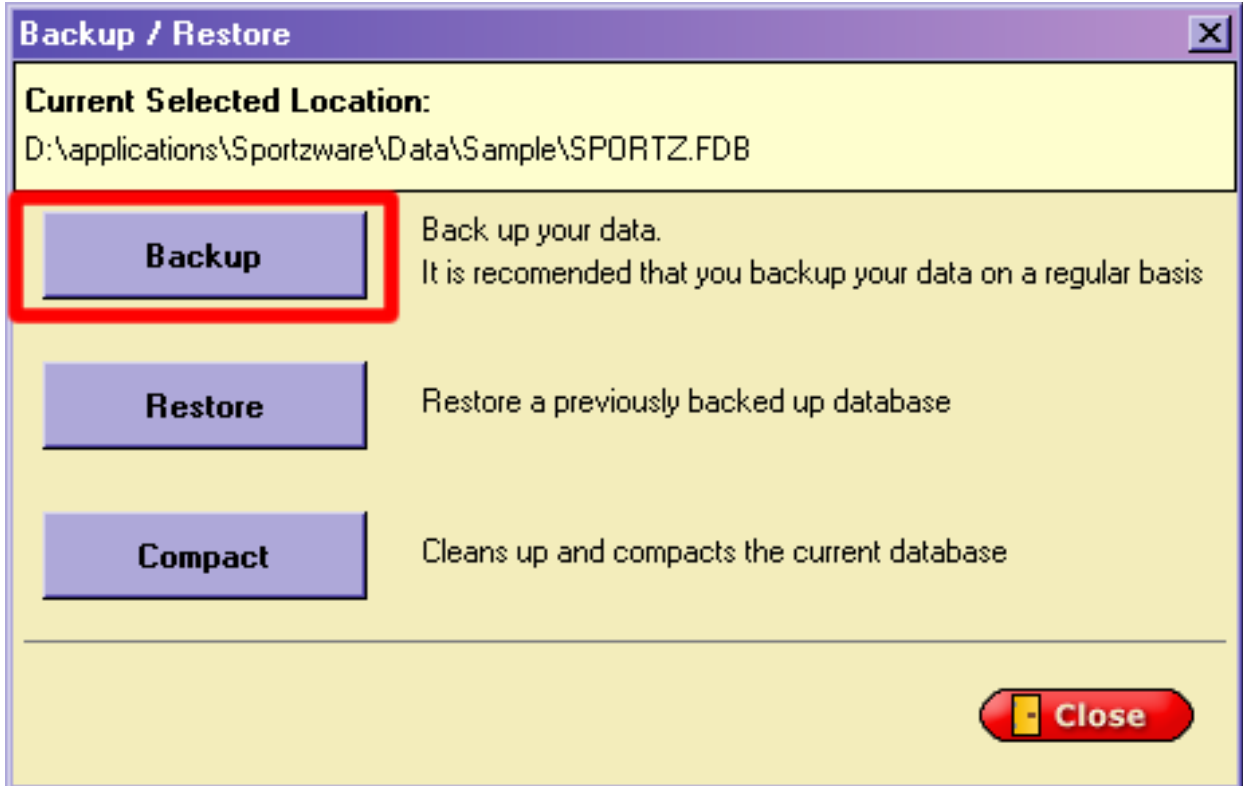
Running a Specstrap (Network install)

If you are running Sportzware Central on a stand-alone computer, see [Running a specstrap \(stand-alone install\)](#) (see Page 2).

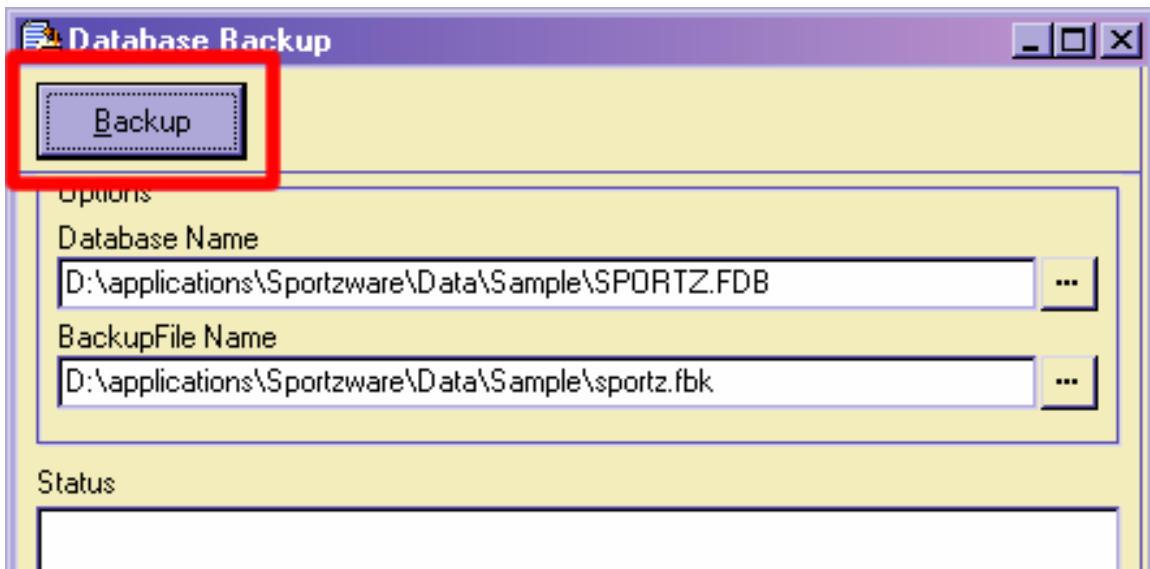
1. Backup your database.
 - a) **Ensure that all other users on the network close Sportzware Central.**
 - b) In the Sportzware Central data manager, single click on your database location so that it is highlighted.
 - c) In the dropdown menu at the top of the data manager, select File and then Backup/Restore/Compact.



d) Click Backup

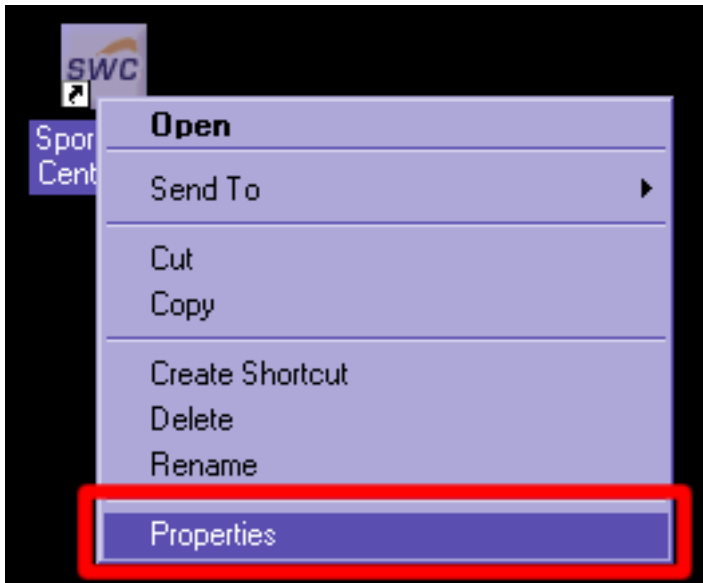


2. On the Database Backup window that appears, click Backup. This process can take several minutes, depending on the size of your database.

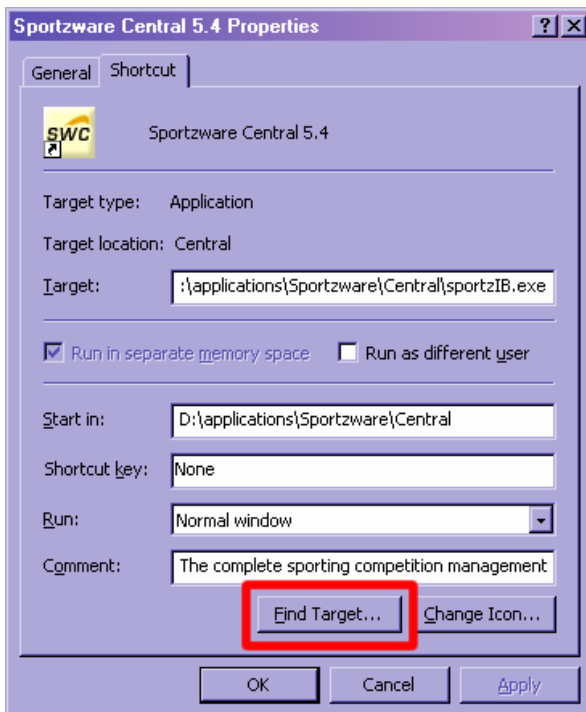


3. Copy the specstrap.cfg file provided by SportingPulse into the same folder as the Sportzware Central exe file:

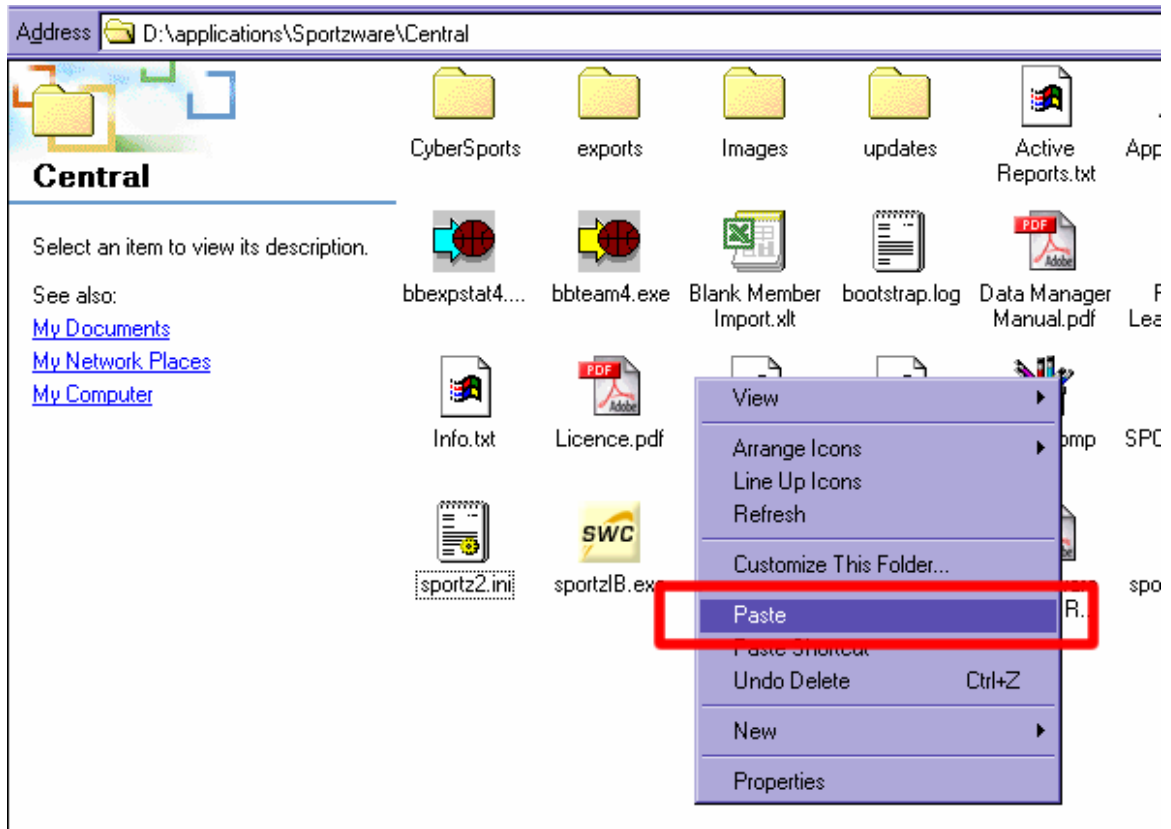
a) Right click on the Sportzware Central icon on your desktop and select properties.



b) On the Shortcut tab, click Find Target. A folder window should open.



- c) Switch to you email program and copy the specstrap.cfg attachment sent to you by SportingPulse.
- d) Right click in the folder window and select Paste. You should see the specstrap.cfg file appear in the window.

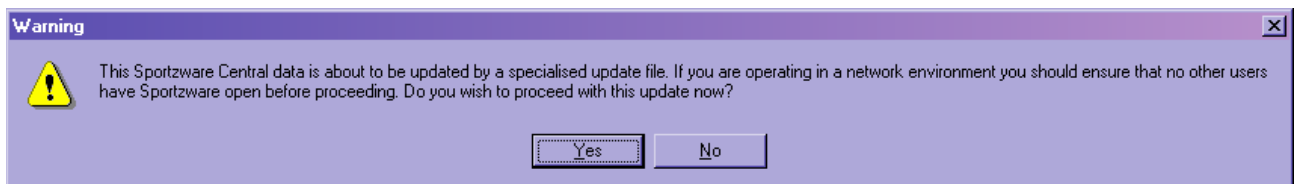


4. Launch your Database.

- a) In the Data Manager, click on the launch button



- b) The popup message shown below should appear. Click Yes.



- c) When the Navigation Centre appears, the specstrap has finished running. Other network users can now log back into Sportzware Central.

If you experience any issues or have any queries then please do not hesitate to contact SportingPulse Support on any of the below details:

Phone (Australia): 1300 13 99 70
Phone (New Zealand): 0800 808 202
Phone: +61 3 9872 5277
Email: support@sportingpulse.com